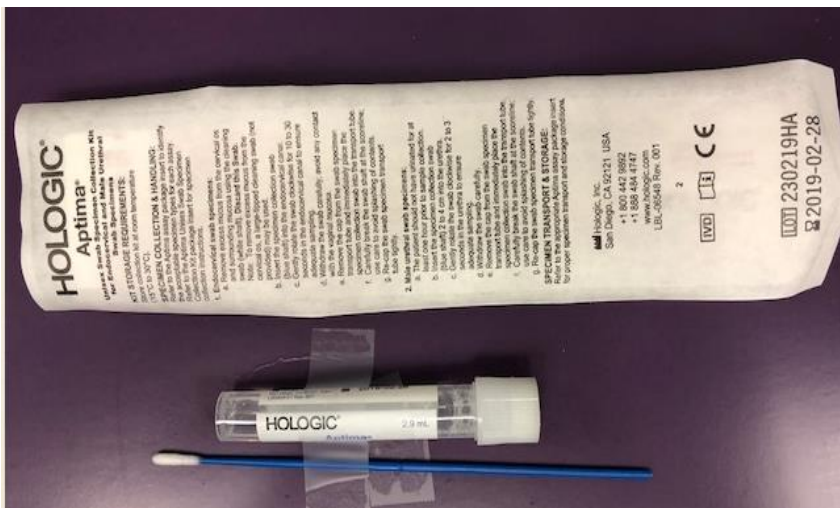


CT/NG Throat, Rectal, and Male urethral sources Chlamydia trachomatis and Neisseria gonorrhoea by PCR Test code – X Miscellaneous

Collection kit: Hologic Aptima Unisex Swab Specimen Collection kit

Obtain kits from Women and Infants

(P)1-401-274-1122 x 41191



Discard white cleaning swab (white wrapper with red lettering)

Collect with blue swab (white wrapper with green lettering)

Do NOT puncture the foil top.

Do not use this system to collect female genital sources.

- **Throat collection instructions:**
- Use the Hologic APTIMA Unisex Swab Specimen Collection kit (white label). Using a tongue depressor, insert the small, blue shafted collection swab (Unisex kit, NOT the larger white shafted cleansing swab) and vigorously rub the tonsils and the posterior pharynx. Carefully remove the swab without touching any area of the mouth. Remove the cap from the swab specimen transport tube and immediately place the swab into the transport tube. Carefully break the swab shaft at the score line. Re-cap the swab specimen transport tube tightly, label and ship to the lab.
- **Rectal collection instructions**
- Use the Hologic APTIMA Unisex Swab Specimen Collection kit (white label). Insert the small, blue shafted collection swab (Unisex kit, NOT the larger white shafted cleansing swab) approximately 3-5 cm into the rectum. Rotate swab against the rectal wall at least 3 times. Withdraw the swab carefully. Swabs that are grossly contaminated with feces should be discarded and the collection repeated. Remove the cap from the swab specimen transport tube and immediately place the swab into the transport tube. Carefully break the swab shaft at the score line. Re-cap the swab specimen transport tube tightly, label and ship to the lab.
- **Male urethral collection instructions:**
- Use the Hologic APTIMA Unisex Swab Specimen Collection kit (white label). Insert the specimen collection swab (blue shaft swab in the package with the green printing) 2 to 4 cm into the urethra. Gently rotate the swab clockwise for 2 to 3 seconds in the urethra to ensure adequate sampling. Withdraw the swab carefully. Remove the cap from the swab specimen transport tube and immediately place the specimen collection swab into the transport tube. Carefully break the swab shaft against the side of the tube at the scoreline and discard the top portion of the swab shaft; use care to avoid splashing of contents. Re-cap the swab specimen transport tube tightly, label, and ship to the lab.