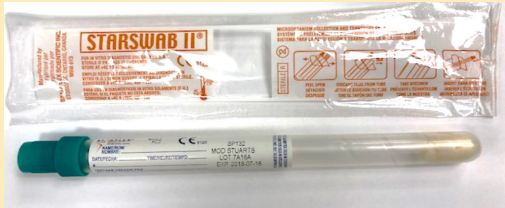


Care New England Microbiology Department Genital Specimen Collection Devices

Test Code: C Genital
Test: Genital culture
Device: Starswab II
Green top swab with moistened
Amie's sponge (routine swab)



Test Code: Affirm
Test: Candida species, Trichomonas,
Bacterial Vaginosis ratio indicator
Device: BD Affirm VPIII – Ambient Temperature
Transport System
*Note - Once collected, submit to laboratory within
24-48 hours. Sample is only stable for 72 hours.*



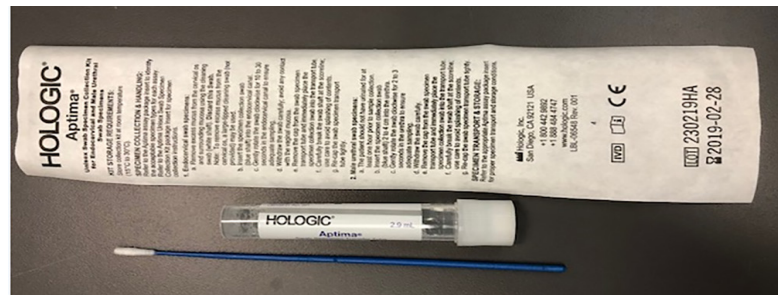
Test Code: GBS
DNA
Test: GBS Genital
Screen
Device: LIM broth
(place rectovaginal
swab into broth after
collection)

Sources: Vaginal, Endocervical
Test Code: CT/GC Swab PCR
Test: Chlamydia trachomatis and/or
Neisseria gonorrhoea by PCR method (female)
Device: Dual swab sample packet
Female genital specimens only



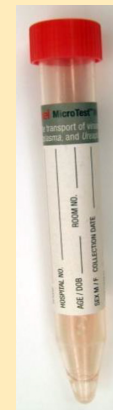
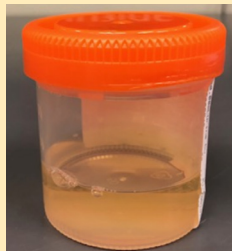
Please submit only one swab per test.

Sources: Throat, Rectal, or Male Urethral
Test Code: Miscellaneous
Test: Chlamydia trachomatis and/or Neisseria
gonorrhoea by PCR method
Device: Hologic Aptima Uniswix Swab collection kit
*Obtain kits from CNE Women and Infants Microbiology Dept Collect with blue
swab. Do NOT puncture foil top. Do not use this system to collect female
genital sources*



Test Code: HPV DNA
Thinprep
Test: HPV (reflex from
AS-CUS or baseline
screen) and HPV type
16/18
or
Test Code: CT/GC
PCR Thinprep
Device: PreservCyt
Thin Prep Vial

Test Code: CT/GC Urine PCR
Test: Chlamydia trachomatis and/or Neisseria
gonorrhoea by PCR method
Device: Sterile screw top urine container
*Note - Send urine to laboratory as soon as
possible (within 24 hours of collection).*



Test: Herpes cultures,
Chlamydia cultures for test
of cure (TOC)
Mycoplasma and Ureaplasma
cultures
Device: M6RT Transport

To obtain supplies, please call (401) 274-1122, ext. 41170.
For specimen collection questions, please call the
Microbiology Department at (401) 274-1122, ext. 41191.

carenewengland.org/laboratory

Care New England Microbiology Department Routine Specimen Collection Devices



Routine bacterial culture (aerobic): throat, superficial wound, etc.

Starswab (rayon swab with moistened sponge).

Collected specimens should be transported to the lab as soon as possible. Stable at room temperature up to 24 hours.

Do NOT refrigerate



Anaerobic cultures

Must add extra swab in Port-a-Cul vial transport media.

Source: Tissues or deep wound

Do NOT refrigerate

Note – Please submit body fluids in a sterile container (not inside of a swab).



Rapid Flu A/B DNA (nasal) White capped Puritan swab

Transport to lab immediately. Specimen stable at 2-8C for 24 hours.



DNA MRSA Screen (nasal)

Copan red-capped double swab

Transport to lab immediately. If unable to transport immediately, refrigerate at 2-8C until ready to transport to lab (within 72 hours).



Viral culture – all sources

Chlamydia, Mycoplasma, Ureaplasma, and Herpes cultures – genital sources. Respiratory Pathogen PCR Panel (nasopharyngeal)

M6RT transport media

Unused tubes can be stored at room temperature. Once collected, send to lab immediately or refrigerate at 2-8C until ready to transport to lab (within 48 hours).

To obtain supplies, please call (401) 274-1122, ext. 41170.

For specimen collection questions, please call the
Microbiology Department at (401) 274-1122, ext. 41191.

carenewengland.org/laboratory